



Our CASA group had another wonderful evening together on Friday, March 26. The time seemed to just fly by...Pat and I didn't want anyone to leave! This time Phil was able to join us, along with Ed and Sue and Mark and Susan. Ginger had a prior commitment and couldn't be with us. Ginger, get your "booty" to the next get-together! Anyway, the pizza was great, Sue's salad was chocked full of "good stuff," and Susan's cobbler was a hit again. Are we having too much fun??

Each of the artists brought a sampling of his wares. Everyone enjoys this part of the time together. It is encouraging and stimulating.

Phil brought his latest painting, accompanied by a print. Beautiful! The guys discussed, at length, digital reproduction processes, prices, etc. He also brought a proof sheet of slides he took at the Salt River Canyon on a recent trip there. Those are some unique shots!

Next, Ed brought out part of his extensive portfolio of caricatures done in his unique style during his career at the Guard. They were so good, but the stories about each one were even more interesting. Of course, military jokes abounded! Ed also brought photos of set design projects he has worked on and some pen and ink desert scenes he's created.

When it was Mark's turn to show what he brought, the evening was just about over, but he did manage to get some time in. He brought several pencil sketches and a color comp. Some were variations of "face" concepts on a Native American and pencil studies of beautiful modeling. Next time, Mark, just jump in first to get equal time!

All this begs the question, "When is CASA's

first show??" Talent certainly isn't lacking in this group, but time might be another story!

While the men were having fun, we ladies did a lot of laughing as well. Plus Sue showed us a calendar she has been saving of beautiful folk art paintings that she plans to frame and hang in her kitchen. We enjoyed looking at them. Susan and Ginger, what type of art do you enjoy?

During the evening we managed to talk about future activities for the group. The men plan to go out on an early (SERIOUSLY early) jaunt to do some photography, sketching, and painting. Places like Patagonia were mentioned. Any suggestions? I say let 'em go for it. Not even shopping can lure me out of the house that early!!

Our next group outing (ladies included) is planned for Saturday, April 17, from 10 am to 2 pm at Rosequist Galleries on Skyline at Campbell. It's a Signature Watercolor Show that everyone agreed would be a good one to attend. We'll meet at Rosequist at 10 o'clock, check out the show, and then find a fun place for lunch. Pat and I are looking forward to it. It will be a great time together. Ed, please remember to invite Tony if you think he would enjoy it. He would have invaluable input.

Mark your calendar for our next regular meeting. Ed and Sue will host us for a barbecue on Saturday, May 15, at 4 pm. Details are forthcoming.

Well, that's about all I have to report. Pat has some more art information he wants to impart. See everyone on the 17th at Rosequist!!

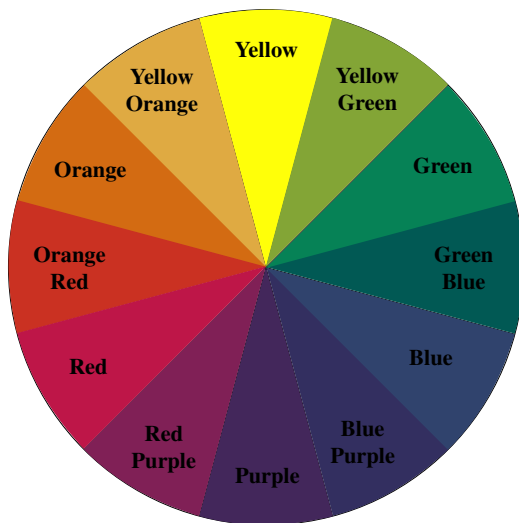
Shar

Understanding & Using Color

COLOR HUES

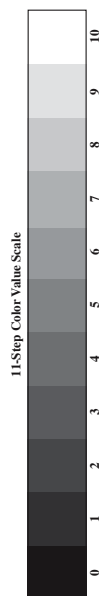
The traditional color wheel shown here illustrates the 3 Primary Hues (Yellow, Blue and Red), 3 Secondary Hues (Green, Purple, and Orange), and 6 Intermediate Hues (Yellow Green, Green Blue, Blue Purple, Red Purple, Orange Red, and Yellow Orange).

For simplification we will use their initials as identification...Y, YG, G, GB, B, BP, P, RP, R, OR, O, and YO.



COLOR VALUES

Any color (for painting purposes) can be shown in 11 equal steps of dark to light. Each of the 11 steps is called a "Value" (0=Black, 1, 2, 3, 4, 5, 6, 7, 8, 9, and 10=White) of that certain "Hue" (Y, YG, G, GB, B, BP, P, RP, R, OR, O, and YO). Combining these Hue "Initials" and Value "Step" identifications will clearly name any color and where it lies on the color wheel. For instance Y5...this is Yellow to the 5th value...it just so happens that Yellow to the 5th value is named "Yellow Ochre"...a well-known color.



COLOR CHROMA

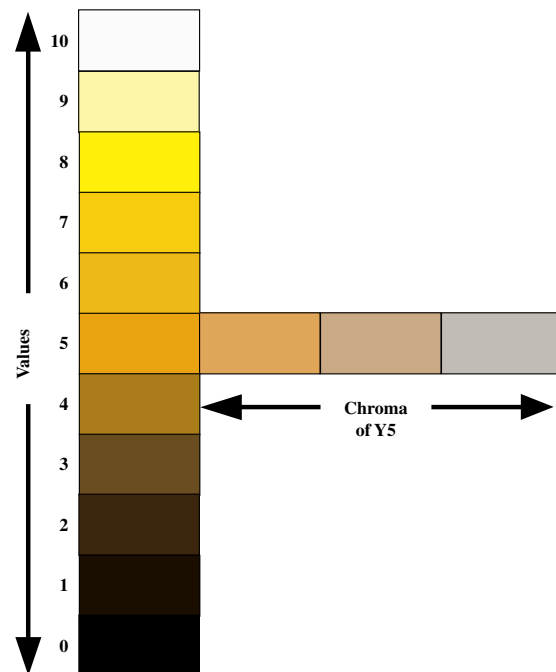
The final attribute of any color deals with the intensity or "Chroma" of its color pigment. To render a Hue's color pigment to a neutral grey of the same value is done two ways...

#1. Add its complement (of the same Value) to the original Hue...

#2. Add a neutral grey of the same Value to the original Hue.

The number of steps it takes to "neutralize" a Hue's Chroma depends upon the intensity of the pigment used in the creation of the color. Some pigments are more intense than others and require more neutralizing steps. This is why there is no common number of steps (i.e., seven steps) to encompass all colors.

Yellow (Hue)



The understanding and control of color is one of the "coolest" facets of painting.

Pat